

Special Projects

Ann Hart, Director

About me

Math Geek and Computer Nerd

Employed by the Township of Union Public Schools for 30+ years

- ❖ Math & Computer Science Teacher
- ❖ “Computer Room” Data Coordinator, Scheduler
- ❖ Supervisor
- ❖ Director

Department of Special Projects

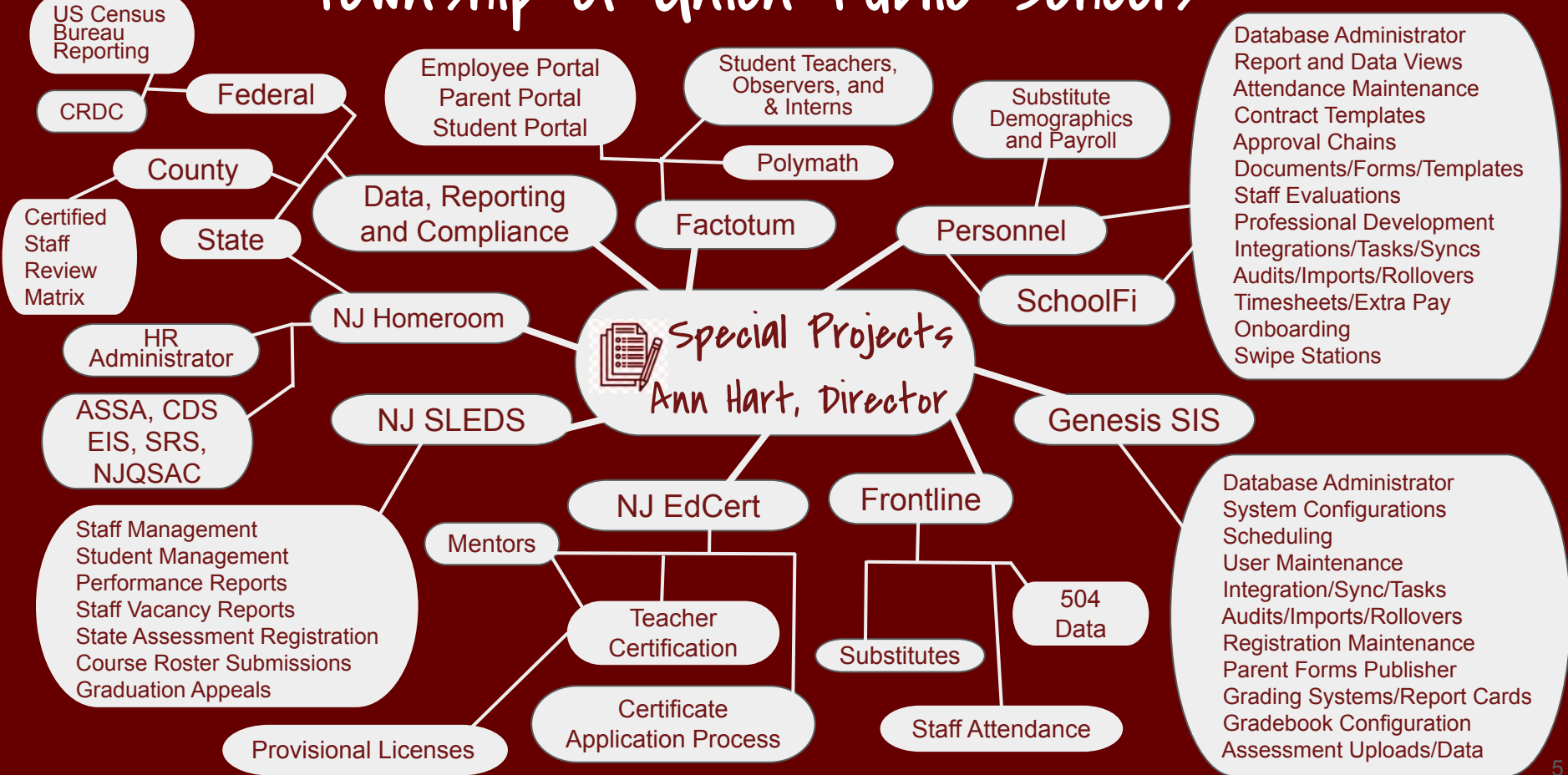
The Department of Special Projects manages the organization, analysis, execution and submissions of districtwide data and information.

As the district's go-to resource, the department provides support, training, guidance, and practical solutions where and whenever assistance or information is needed.

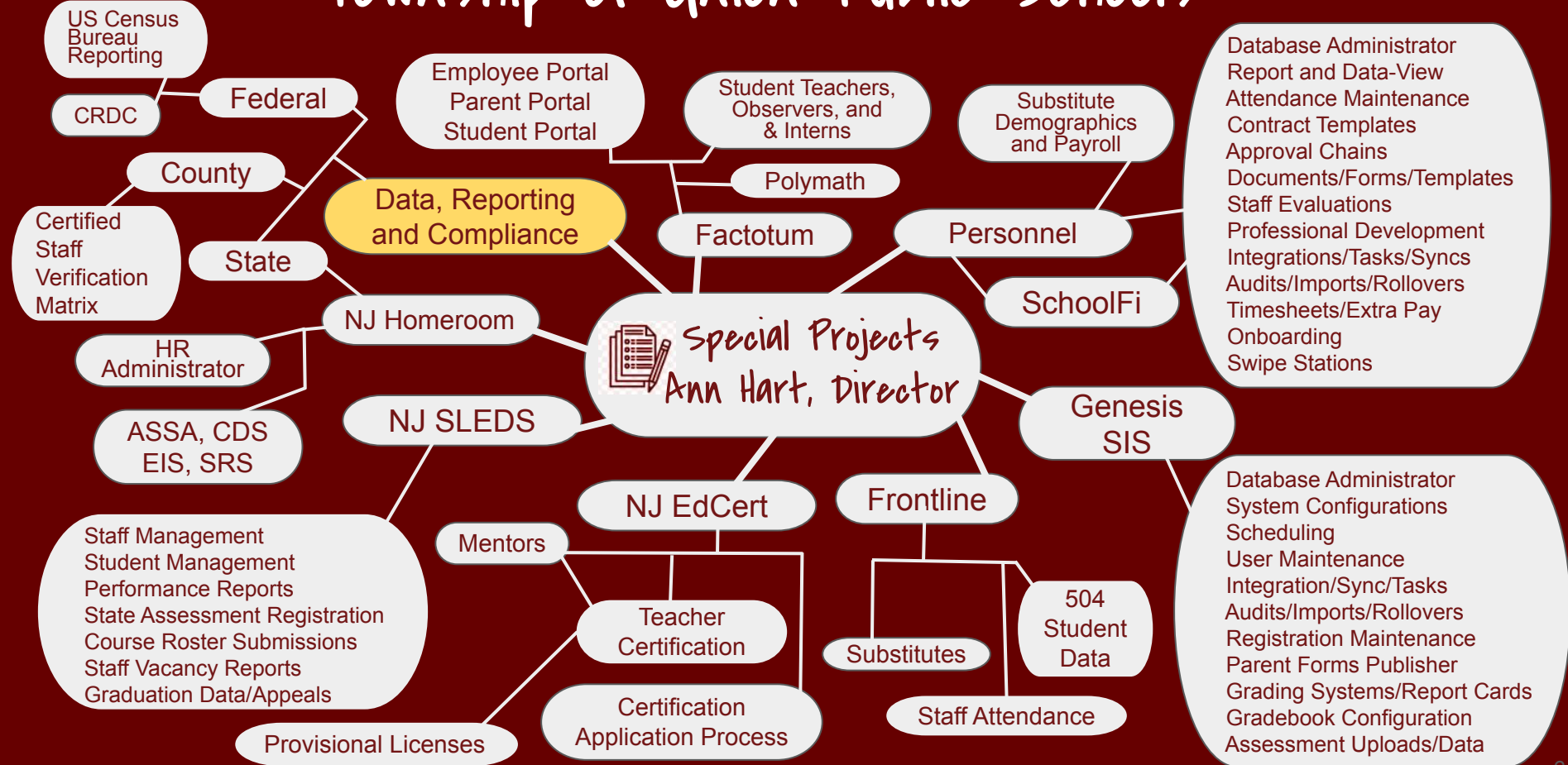
Mission/Vision/Goal of the Department of Special Projects

- ❖ The Department of Special Projects upholds the highest standards of compliance with all Federal, State, and County reporting requirements.
- ❖ Special Projects fosters effective communication and collaboration among all stakeholders—from students to the US Department of Education.
- ❖ Through research and implementation of strategic initiatives, Special Projects aims to streamline processes, improve operational efficiency, and support the District's commitment to fiscal responsibility.

Township of Union Public Schools



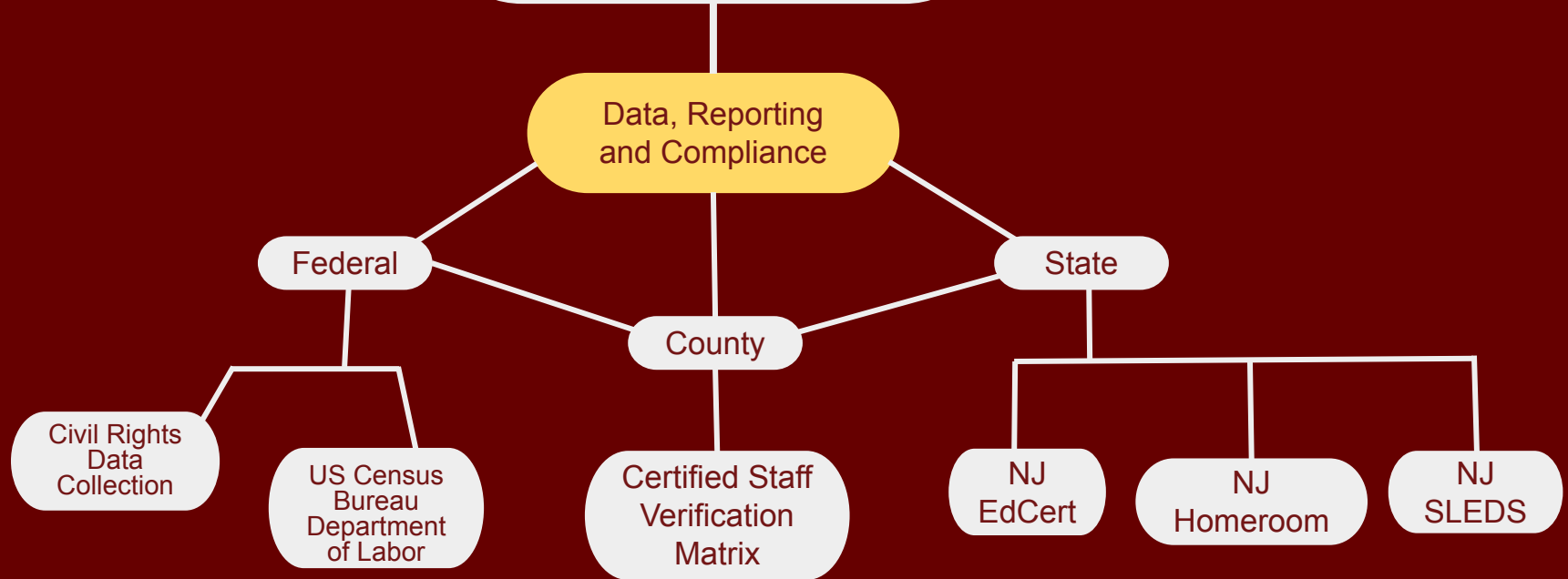
Township of Union Public Schools



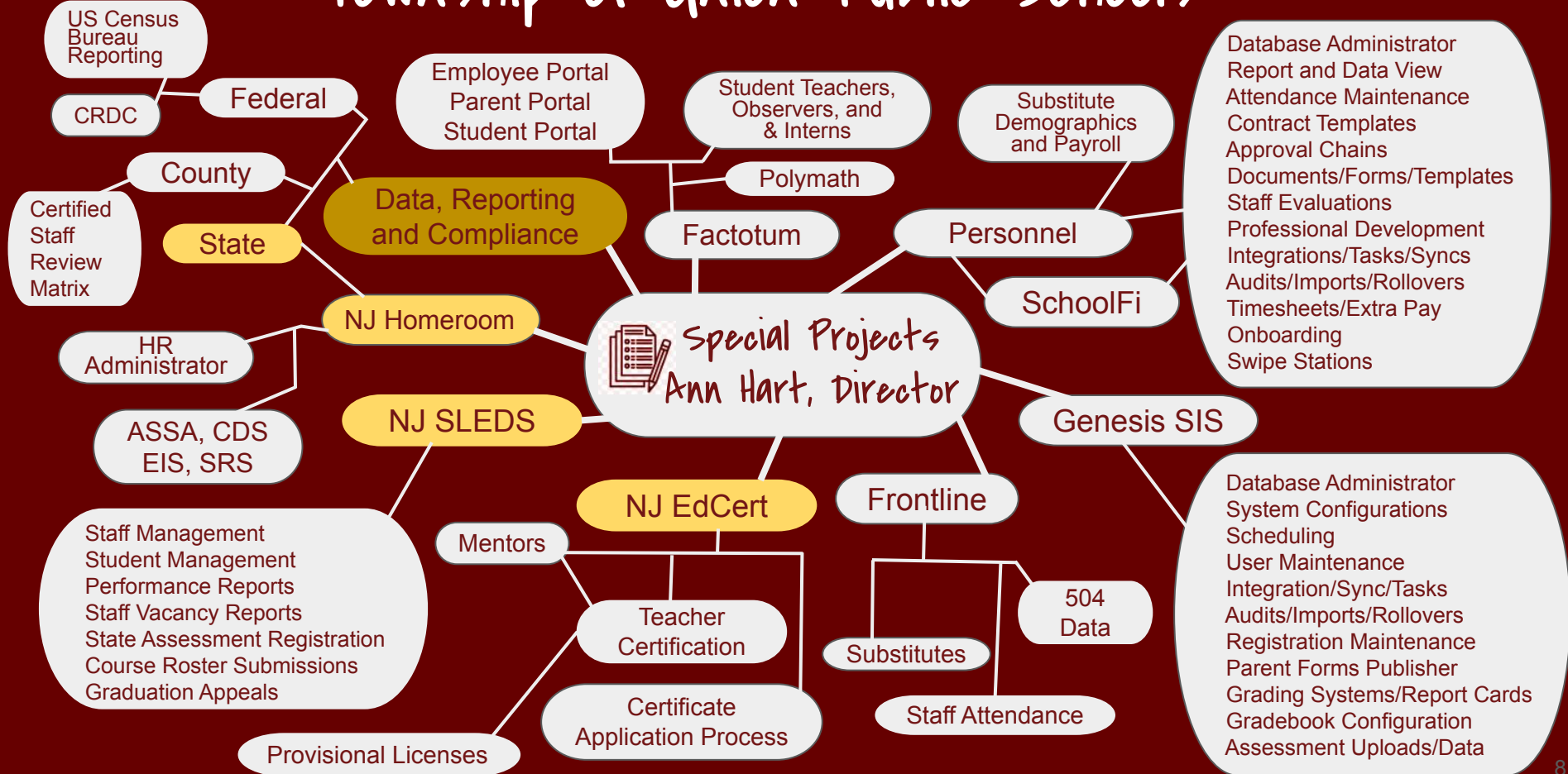


Special Projects

Ann Hart, Director



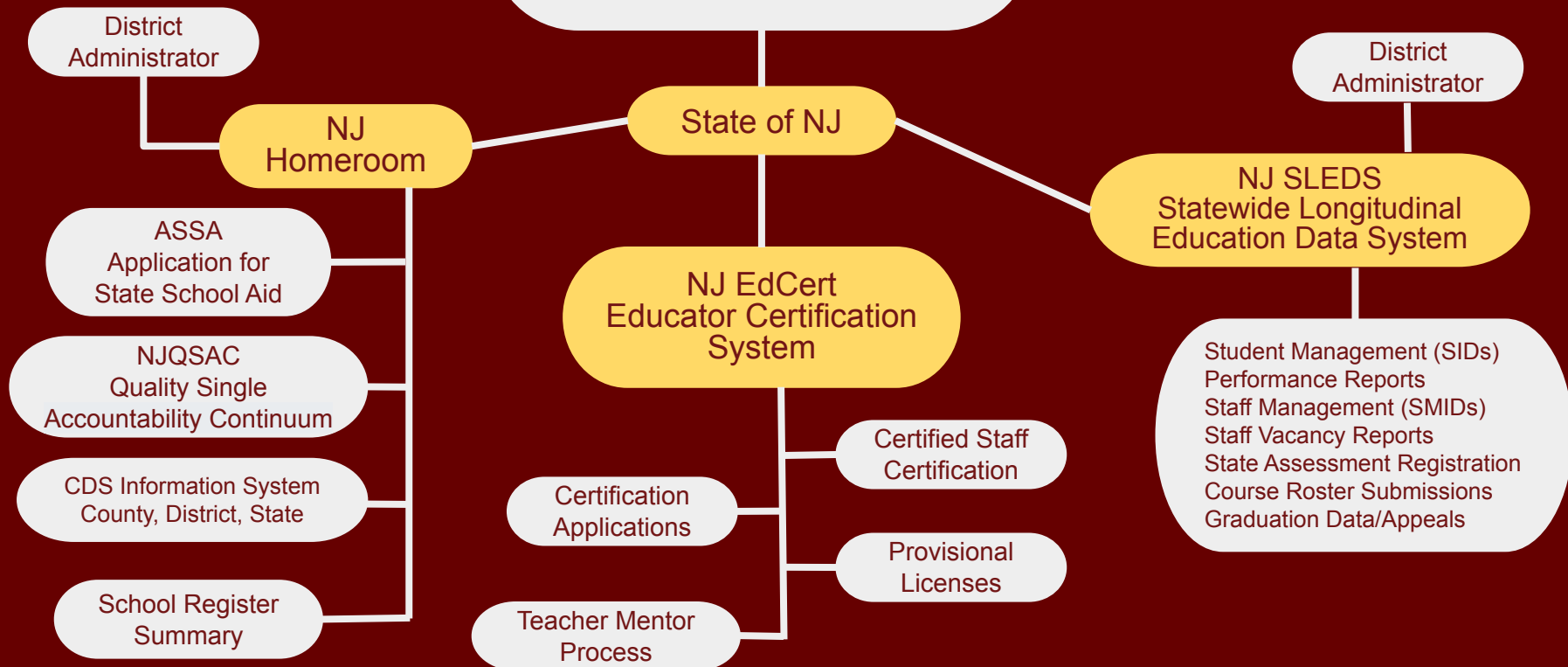
Township of Union Public Schools



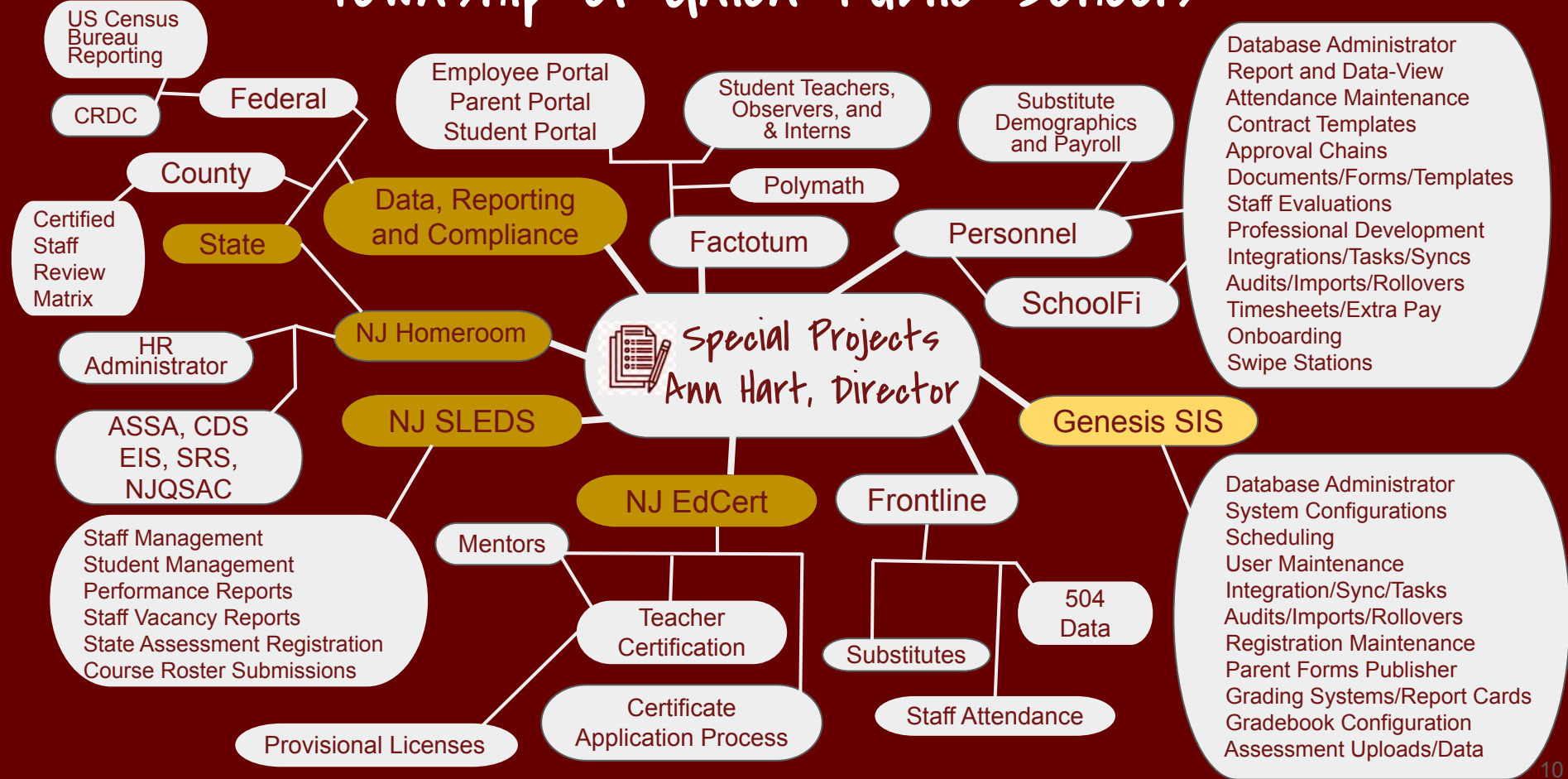


Special Projects

Ann Hart, Director



Township of Union Public Schools





Special Projects

Ann Hart, Director

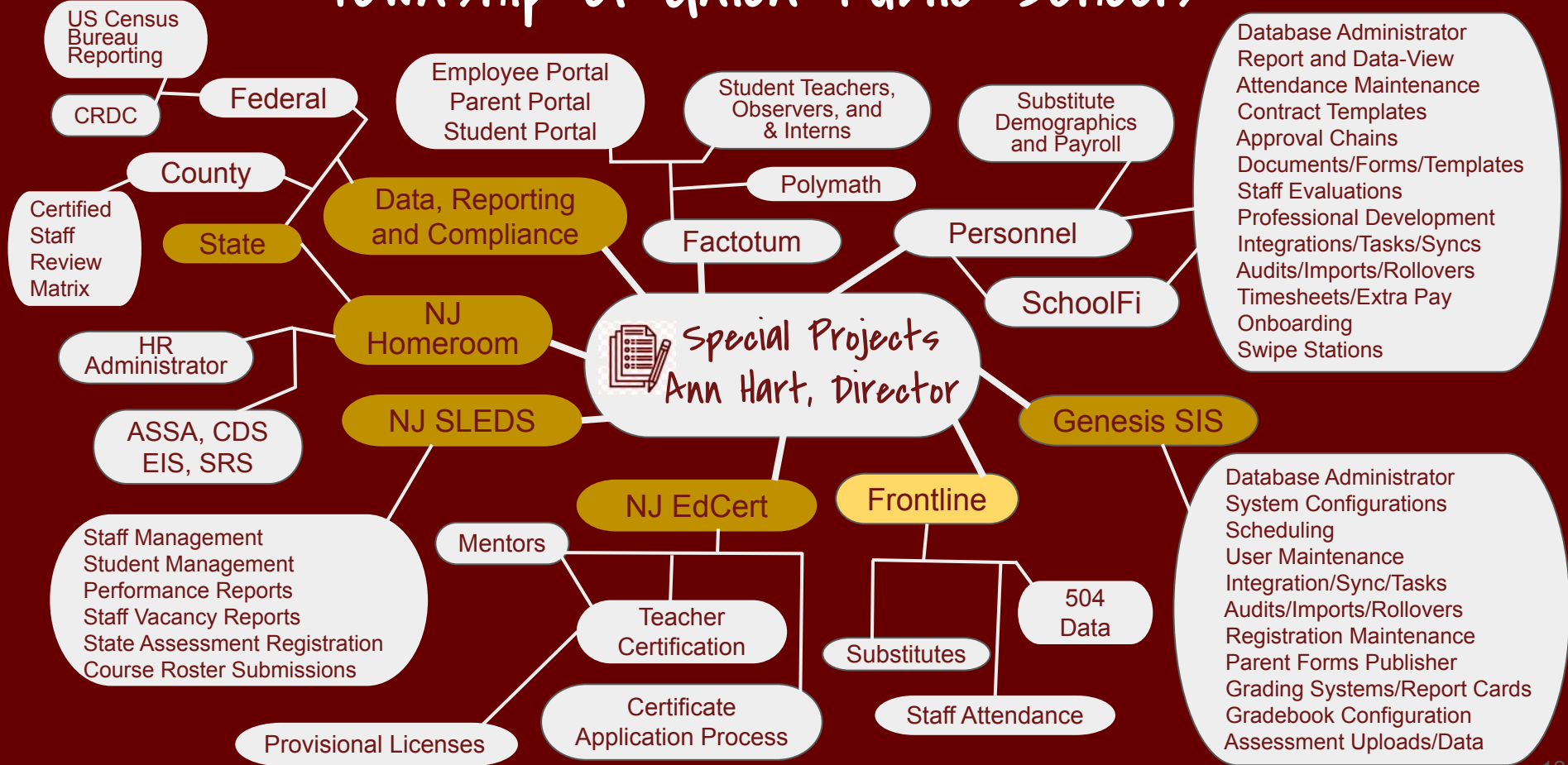
Genesis Student Information System

Database/
System
Administrator

System Configurations
User Maintenance/Security
Integration/Sync/Tasks
Audits/Imports/Rollovers
Assessment Uploads/Data

Teacher, Parent, and Student Portals
Scheduling and Class Assignments
New Student Online Registration
Letters, Documents and Reports
Parent Forms / Publisher
Grading Systems / Report Cards
Teacher Gradebook Configurations / Updates
Turnstyle, Payments, Conduct
Student Attendance
Graduation Data/Maintenance/Appeals

Township of Union Public Schools





Special Projects

Ann Hart, Director

Frontline

Student 504
Maintenance

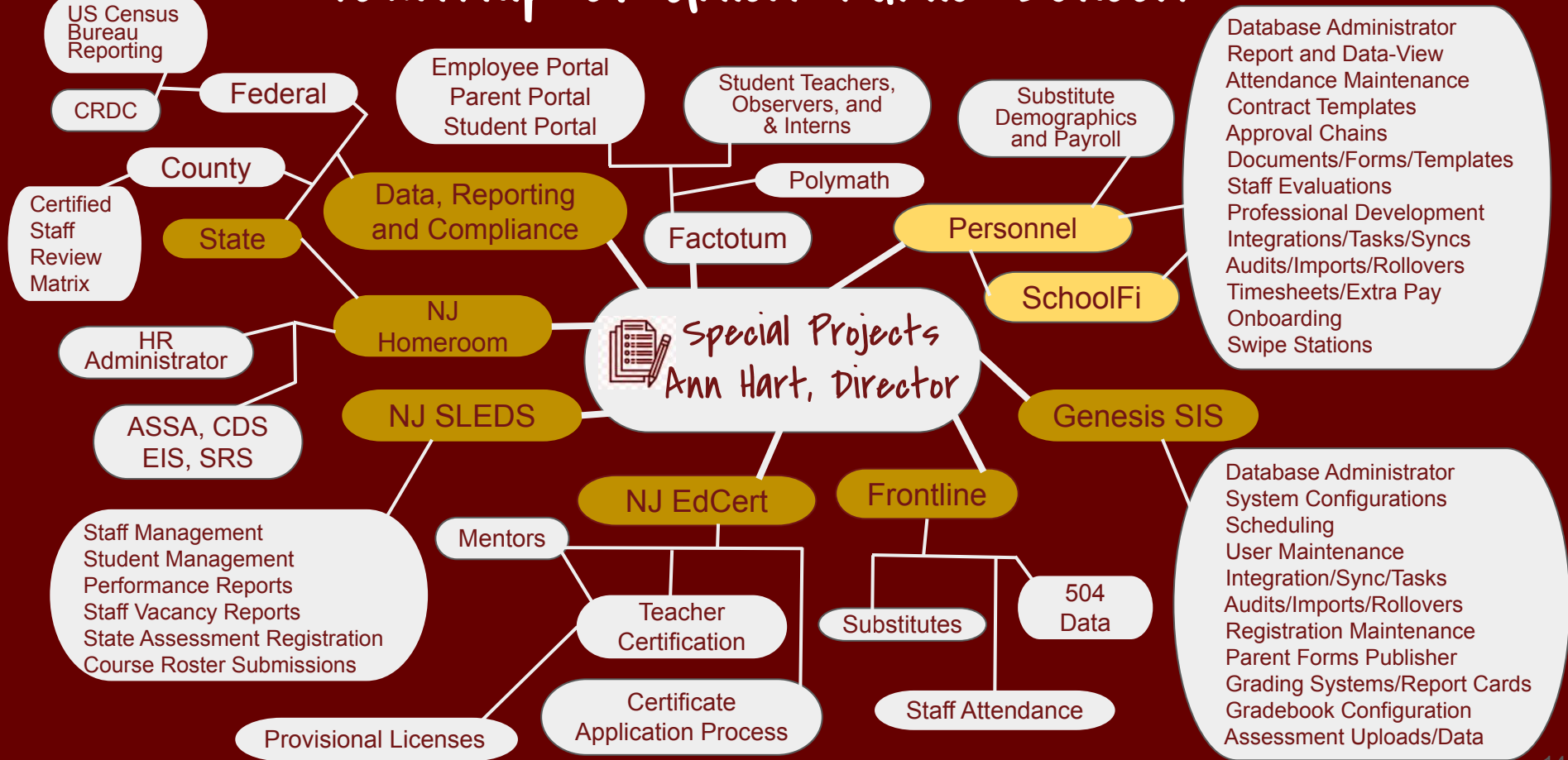
System Configurations
User Maintenance/Security
Integration/Sync/Tasks
Audits/Imports/Rollovers

District Substitutes

Staff Attendance
Staff Calendar Alignment

Professional Development
Certified Staff Evaluations
**moved to SchoolFi

Township of Union Public Schools





Special Projects

Ann Hart, Director

Personnel

SchoolFi Staff Management System

****NEW TO SCHOOLFI****
Evaluations
Observations
Professional Development

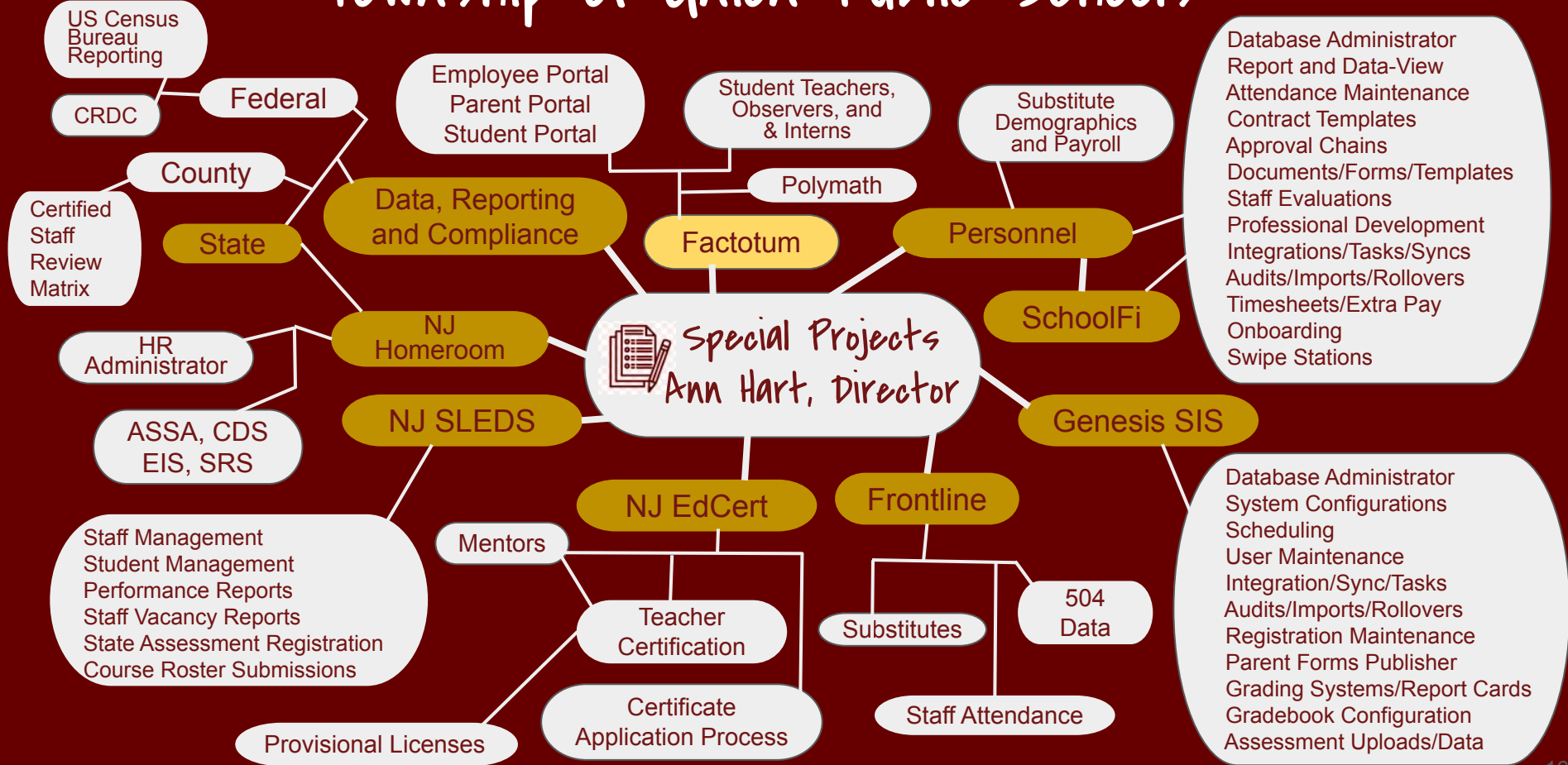
Database Administrator
System Maintenance
SchoolFi User Accounts
System Configurations
Platform Security
Integration/Sync/Tasks
Audits/Imports/Rollovers

Staff Maintenance/Assignments
Staff Demographics
Absence Maintenance
Reports, Data Views
Contract (Templates)
Approval Chains
Timesheets/Extra Pay
Onboarding Documentation
Swipe Stations

Substitutes
Demographics
Assignments
Payroll

Staff Attendance
Staff System Calendars

Township of Union Public Schools





Special Projects

Ann Hart, Director

Factotum

Student Teachers
Student Observers
Educational Interns
Para-to-Teacher Programs
Alternate Route Programs

Kean University
Seton Hall University
Union College
Rutgers University
Montclair State University
Grand Canyon University
Western Governors University
Ramapo College

Employee Portal
Teacher (grading) Portal
Parent Portal
Student Portal

Polymath

District "Go-To"
Notifications (parents, students, staff)
Problem Solver
Trouble Shooter
Provides Information, Data, Facts
Research Issues
Systems Setup and Integration

Support & Assistance
Students
Parents
Teachers
Staff
Administration

Township of Union Public Schools



What's New in Special Projects?

Employee Portals (100% integration)

- ❖ Everyone employed by the BOE has an account
- ❖ Onboarding (New Employees)
- ❖ Payroll/Direct Deposit/Tax Statements
- ❖ Contracts/Documents
- ❖ Electronic Timesheets
- ❖ Healthcare
- ❖ Staff Attendance
- ❖ Swipe Stations
- ❖ Evaluations

What's New in Special Projects?

Evaluation and Professional Growth Systems

- ❖ Moved from Frontline to SchoolFi
 - Saving the district yearly cost of over \$65,000
- ❖ New System includes evaluations for certified *and* non-certified staff ...
 - Everyone (**All Staff**) will now be evaluated using SchoolFi
- ❖ All evaluations will be stored in the SchoolFi system and accessible through the staff member's Employee Portal

What's New in Special Projects?

NJ SMART (2007- 2025)

New Jersey Standards Measurement and Resource for Teaching

NJ SLEDs

New Jersey Statewide Longitudinal Education Data System

- ❖ SLEDs is designed to streamline the process of submitting and maintaining essential data ensuring compliance with state and federal requirements.
- ❖ New module, “Staff Vacancy”. Districts keep track of open positions, supporting state administrative efficiency.

Special Projects

Ann Hart, Director

Questions?

Township of Union Public Schools

