



# Burnet Middle School Murals

December 14, 2025

# Burnet Middle School

1000 Caldwell Ave, Union, NJ 07083

Courtyard classroom area.

Lowe's will supply paint.

Lowe's will supply 4 x 4' plywood panels to be polyurethaned and fastened to the brick wall.

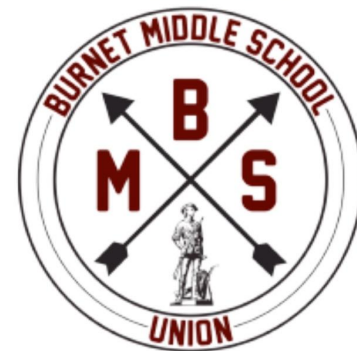
Full supply list TBD.

12.5 feet chalk wall area. Lowe's will take care of this.

Nine 4 x 4' panels. One 4 x 6' panel.

Wonders of the world theme. Hallway of school features the flags of the world on the ceiling.

"Burnet sees the world panel" hung higher than the other eight (4 x 6')



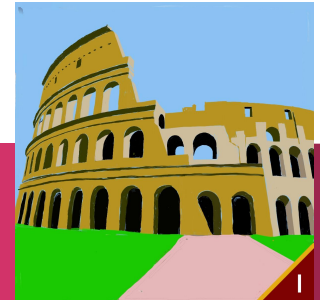
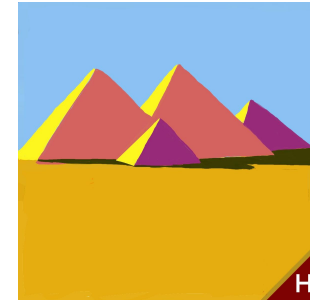
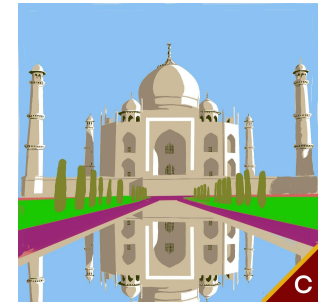
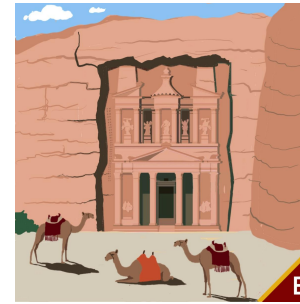
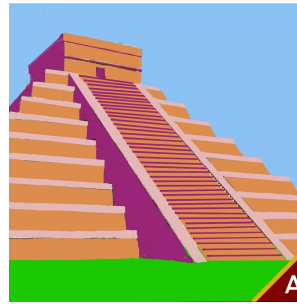
# Burnet Templates

1, 4 x 6' Panel

9, 4 x 4' Panels

**BURNET SEES THE WORLD**

- A.** Chichén Itzá, Mexico
- B.** Petra, Jordan
- C.** Taj Mahal, India
- D.** Machu Picchu, Peru
- E.** Parthenon, Greece
- F.** Great Wall of China
- G.** Statue of Liberty, USA
- H.** Great Pyramid of Giza, Egypt
- I.** Colosseum, Italy



# Burnet Wall Panels 1



## Burnet Wall Panels 2

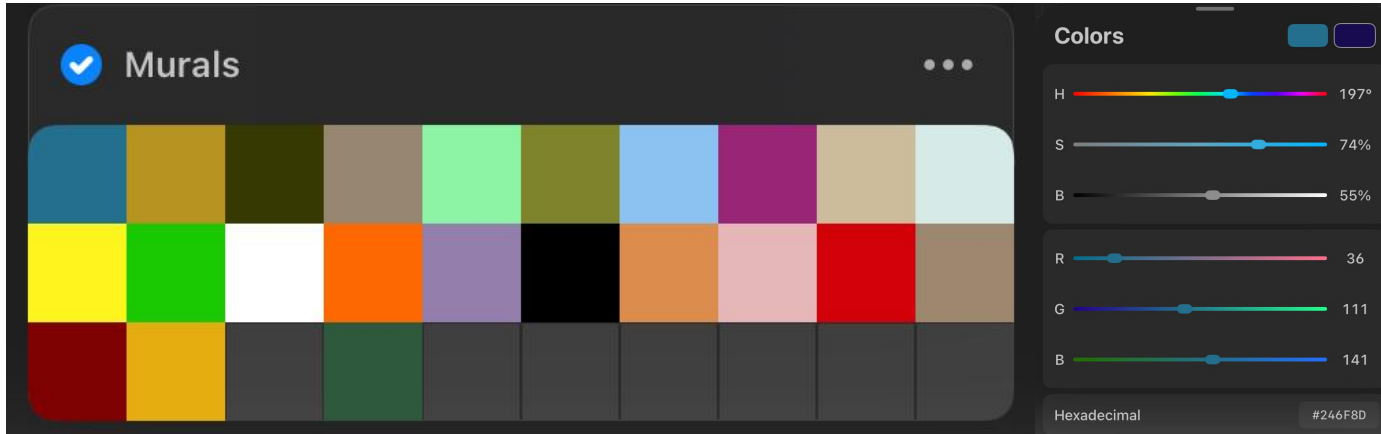




# Paint

For this project we will need in total 3 gallons of paint.

Once the designs are approved we will specify what paint colors we need.



# Contacts

Paul Federico, Westfield Art Association, 908-403-3167, paulfederico00@gmail.com

Darrin Owens, Westfield Art Association, 646-408-3643, deo741@outlook.com

Chris Baylor, Lowe's, 973-234-8208, chris.baylor@store.lowes.com

Ashley Delfino, ashley.delfino@store.lowes.com

Amanda Procaccino, Westfield High School Art Teacher, [aprocaccino@westfieldnj12.org](mailto:aprocaccino@westfieldnj12.org)

Mr Ben Kloc, Principal, Burnet Middle School, Burnet Middle School, 908-851-6490, BKloc@twpunionschools.org

