



**Superintendent's Report
State of the Schools
January 21, 2025**

A Small Glimpse

Education: Instruction & Program Update

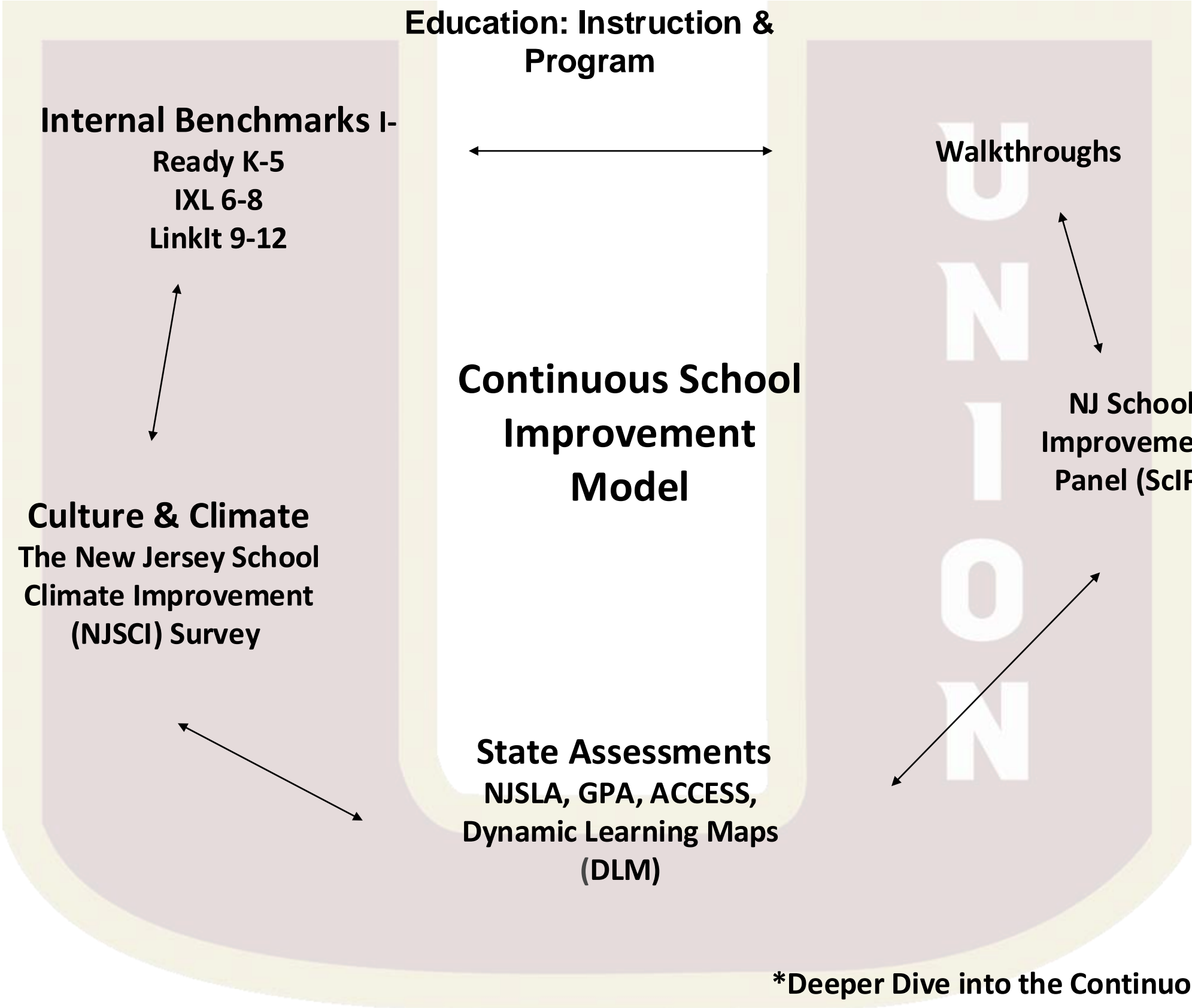
HCES Update

Realignment Update

HIB Report & Affirm

**U
N
I
O
N**

A Small Glimpse



***Deeper Dive into the Continuous School Improvement Model on February 1st**

A Small Glimpse

Learning Walks/Walkthroughs

What is the teacher doing?

Directing the whole group (i.e., lecturing/telling)

Interacting with the whole group (i.e., teacher-ask, student-answer questioning)

Facilitating small groups

Coaching with individual students

At their desk without students

What are the students doing?

Listening to the teacher

Working with a partner or a small group

Working independently

No task is assigned

Presenting or sharing work with the class

Using technology independently.

When in the period did you enter the room

First 1/3

Middle

Last 1/3

Subject

U
N
I
O
N

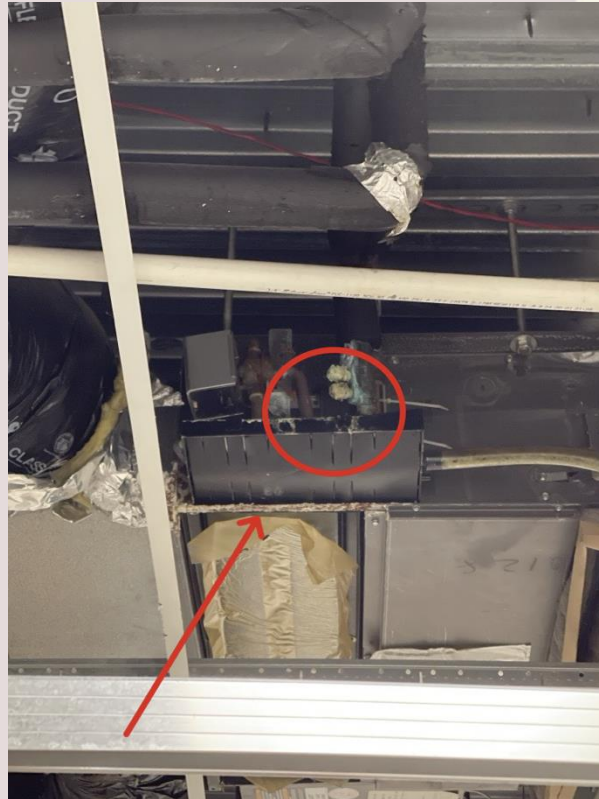
This is a valuable tool for improving teaching practices, fostering collaboration, and enhancing student achievement. TUPS will have over 500 additional pieces of data that we can use to continually improve.

A Small Glimpse

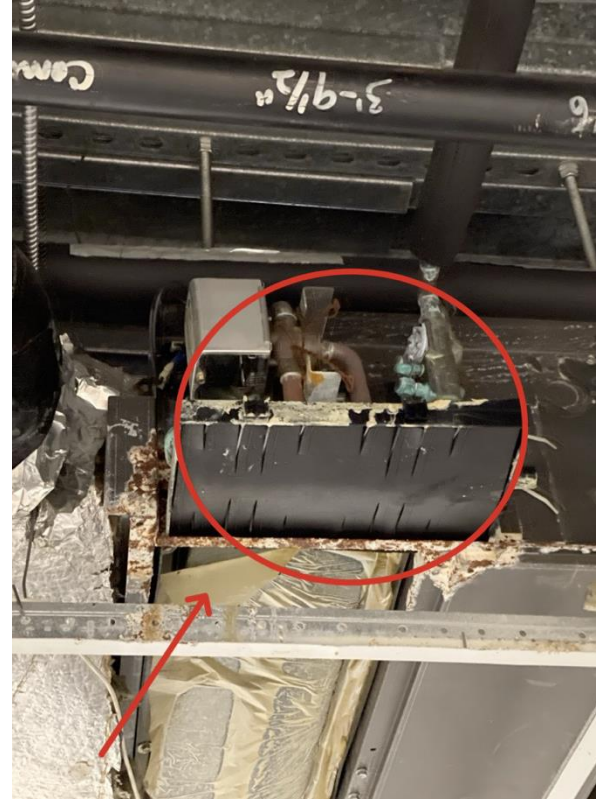
HCES Update

Plumbing Failures

Location Girl's Bathroom 112
A/C unit is leaking



Location Boy's Bathroom 113
A/C unit leaking



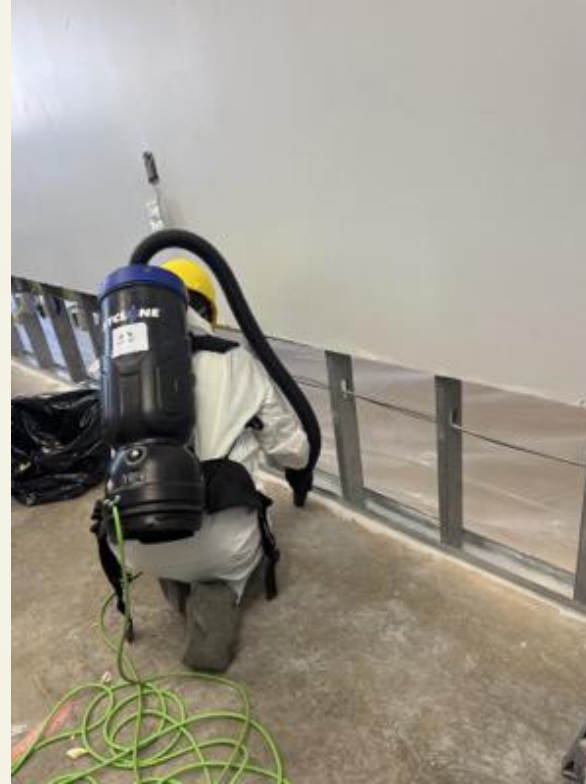
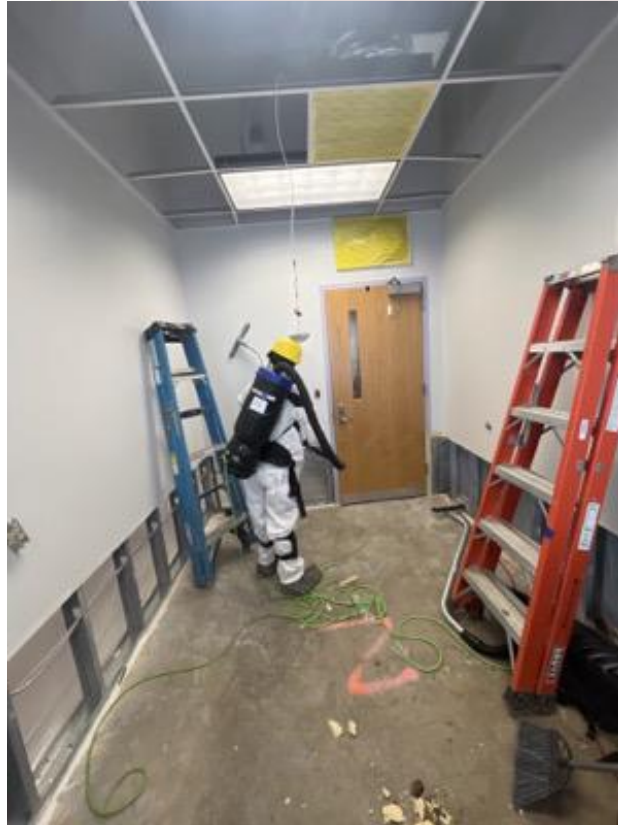
Location Boy's Bathroom 113
Unexpected plumbing failure
located behind urinals



A Small Glimpse

HCES Update

After Demo: Detail Cleaning



Continuous Tasks being completed: Demolition and cleaning in multiple areas, caulking around exterior windows and doors, cleaning and transporting HCES contents.

Environmental Company details work needed to be completed: Library, Room 167, 171, 174, 175, 178, 177, Library Wing Hallway, Boy's Bathroom, Girl's Bathroom, Room 172 Supply Room, Room 179, 180, 162, 163, 166, 169 Boy's Bathroom, 181, 182, 184, 185, 186, 188, 189, 189A, 190, 191, 192, 193, 194, 195, 196, 197, 198, 202, 203, 204, Hallways, 205, 206, 207, 208, 209, 210, 211, 212, 213, 103, 104, 106, 112, 113, 122, 126, 127, 128, 130, 131, 133, 134, 135, 136, 137, 138, 139, 140, 141, 142, 143, 144, 145, 146, 149, 150, 151, 152, 153, 155, 157, 158, 159, 168, 183, main entrance, cafeteria

A Small Glimpse

HCES Update

- Continue to fix the Plumbing Failures
- Zone 1 by the Library is completed
- 7 total Zones
- Masonry work to continue zone by zone
- HVAC – Cleaning and Encapsulation
- Tentative date of completion June 1, 2025

U
N
I
O
N

A Small Glimpse

Realignment Update K-6, 7-8, 9-12

(3) Committees

- Education
- Fiscal/Operations
- Personnel

The realignment will be part of our district-wide labor-management collaborative

T&M Report middle of February

U
N
I
O
N

A Small Glimpse

Realignment Update K-6, 7-8. 9-12

Why do school districts look to realign the grade level configuration?

In the Past: There have been many conversations surrounding the current configuration of our schools going on for quite some time. As the town has evolved and grown, the question was always, how can we best provide for and best educate our community's children? We have continued to discuss the best configuration for the Union community in the context of overcrowding, bussing, academics and test scores, integration, total student development, and financial considerations.

TUPS Benefits of a Kindergarten to Sixth-Grade Configuration

- Development of Leadership and Community
- Academic and Social Preparation/ School Connectedness
- Parental Involvement and Student Well-being
- Adverse Effects of Frequent School Transitions
- Fiscal
- Academic Challenges
- Social-Emotional Impact
- Behavioral Issues
- Middle school brings with it a very specific set of needs for students

The K-6 grade configuration offers significant benefits by providing a stable environment that supports academic growth, leadership development, and emotional well-being. In contrast, frequent transitions between schools can disrupt learning continuity and negatively impact students' social-emotional health.

A Small Glimpse

Resolutions:

Communications:

**Letter of Retirement Thomas Matthews, Gayle Summer, Robert Ghiretti
Request for Leave – Mark Hoyt**

E-11 Approve NJDOE Equivalency Application: In SY25-26, NJQSAC will use a formula for I&P indicators 1-7 that values student growth on assessments more than proficiency.

F-17 Approve Corrective Action Plan – Audit Report: All student activity funds collected should be deposited within a reasonable amount of time.

G-1 Approve Sidebar Agreement – with the UTEA BT, BCaBA, and BCBA SIDEBAR

TUPS One-Click Check-In

Monthly Newsletter!

**U
N
I
O
N**

Harassment, Intimidation, and Bullying (HIB) January 15, 2025 – January 21, 2025

HIB Incidents to Report

	Founded	Not Founded/ Inconclusive	
January 15, 2025 to January 21, 2025	1	0	
	UHS (1)		

Harassment, Intimidation, and Bullying (HIB)

December 19, 2024 – January 14, 2025

HIB Incidents Affirmed Cases

	Founded	Not Founded/ Inconclusive
December 19, 2024 to January 14, 2025	6	5
	UHS 3 BMS 3	UHS 3 BMS 1 JES 1

A Small Glimpse

HIB Bi-Annual Report

September - December 2024, Reporting Period 1 Township of Union School District

Total Completed Reports: 53

Status of investigations:

Founded (met the criteria for HIB): 37

Unfounded/Inconclusive: 16

Total Reports by building:

<u>School</u>	<u>Founded HIB</u>	<u>Unfounded/ Inconclusive</u>	<u>Total</u>
Battle Hill	1	0	1
Burnet	12	1	13
Connecticut Farms	0	1	1
Franklin	0	2	2
Hannah Caldwell	0	1	1
Jefferson	1	3	4
Kawameeh	2	1	3
Livingston	1	1	2
Washington	0	0	0
UHS	20	6	26
Totals	37	16	53

Race	6	Origin	0	Gender Identity	2
Color	2	Gender	11	Mental, physical, or sensory disability	2
Religion	0	Sexual Orientation	7	Other distinguishing characteristics	16
Ancestry	1				

The logo for TUIPS Union is a large, stylized letter 'U' with a light beige border. The interior of the 'U' is a muted purple color. On the right vertical bar of the 'U', the word 'UNION' is written vertically in white, bold, sans-serif capital letters. The 'U' is centered on the page.

Thank You, TUIPS Community!