

State of the Schools

February 21, 2023

U
N
I
O
N

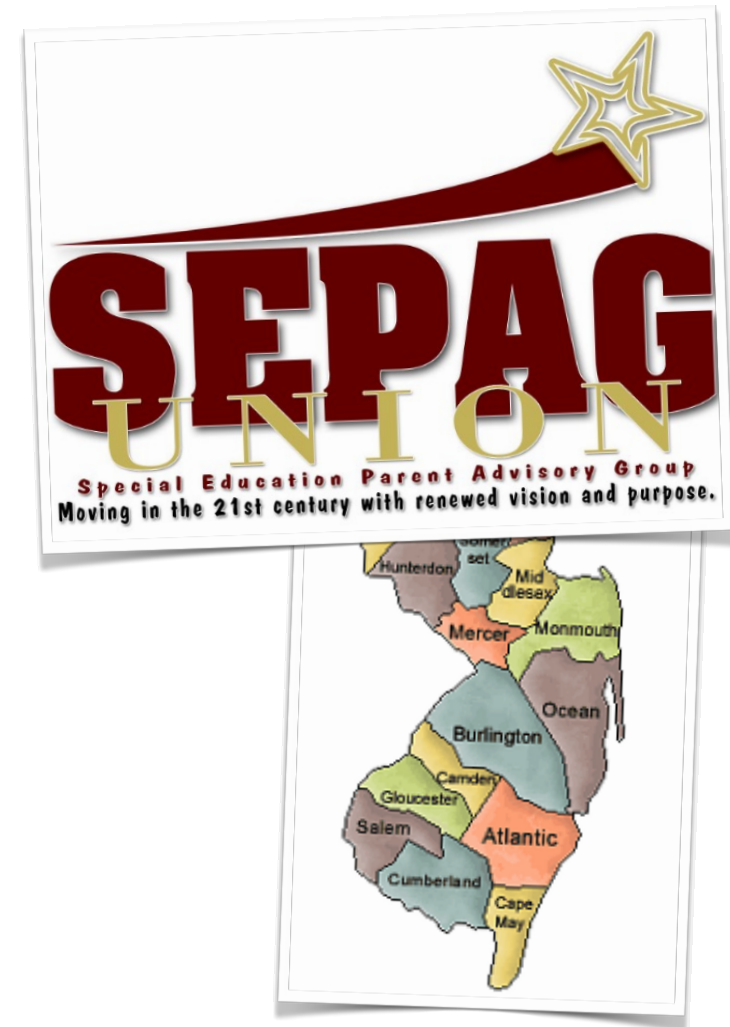
Union's Special Education Parent Advisory Group

What is a Special Education Parent Advisory Group (SEPAG)?

A Special Education Parent Advisory Group is a requirement for every school district in New Jersey according to the New Jersey Administrative Code

6A:14-1.2(h) which states

“Each Board of Education shall ensure that a special education parent advisory group is in place in the district to provide input to the district on issues concerning students with disabilities.”



Union's Special Education Parent Advisory Group

What is a Special Education Parent Advisory Group (SEPAG)?

A SEPAG is NOT A parent support group

A SEPAG is part of the local school district,
NOT a private or independent group.

Union's Special Education Parent Advisory Group

What is SEPAG's Mission?

To serve as a collaborative and supportive platform between students, parents, guardians, school personnel, and the Union community for ensuring high-quality special education programs and the inclusion of children with disabilities, that leads to the maximization of their potential; through learning, sharing of best practices, awareness, and advocacy. Our ultimate aim is for all children with disabilities to live active and enriching lives.

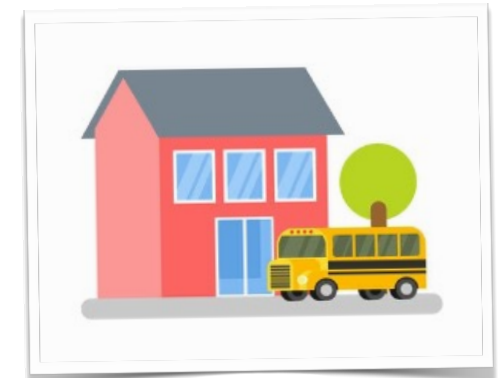
Union's Special Education Parent Advisory Group

What is SEPAG's Mission?

Gives parents and guardians the opportunity to...



provide direct input to the school district about policies, programs, practices, and services that have an impact on students with disabilities and their families.



Union's Special Education Parent Advisory Group

An Effective SEPAG

Help improve...

educational outcomes and wellbeing for all students, including the disabled population. District culture and climate.

Help identify...

needs currently unmet by district.

Help shape...

the development of programs, services, and policies and improve district culture and climate.

Union's Special Education Parent Advisory Group

Benefits of SEPAG

Better relationships

SEPAGs can strengthen the bridge between the school district and families.

Collective problem solving

SEPAGs thrive on team spirit and team action to improve outcomes for students.

System change based on input

Systematic successes and challenges will be identified and evaluated.

Information Sharing

Spreading of best practices among parents, different schools, and staff occurs regularly.

Effective resource allocation

Parents can share valuable input to aid in establishing priorities.

Union's Special Education Parent Advisory Group

Members of the SEPAG

Parents and guardians are the core members of a SEPAG. This includes parents and guardians of children with disabilities who are educated in schools within or outside of the student's home district.

Parents do not need special training or background knowledge to be a member of a SEPAG.

Other members may include: school leaders, including the District Supervisor of Special Services and/or members of the Board of Education; teachers, Child Study Team members, and other school professionals; students and former students; other parents committed to improving education in their district; and community leaders.

Union's Special Education Parent Advisory Group

Members of the SEPAG

Executive Members:

Aracely Di Girolamo - Co-Chair and Kawameeh Middle School liaison

Carla Vicari - Co-Chair

Parent Leaders and School Liaisons:

Sol Atencio - Union High School

Julie Chetram- Out of District Students

Jennie Preval Abbot- Connecticut Farms Elementary School

Yailin Ramirez-Hannah Caldwell Elementary School

Teacher Liaisons:

Teacher Liaison: Ms. Jhalon Motley- Hannah Caldwell

Union's Special Education Parent Advisory Group

Union SEPAG Goals 2022-2023

Provide multiple avenues for parents and caregivers to give input regarding special education in our district.

Foster relationships throughout the district and the community for there to be a greater understanding of what Union SEPAG is and how it can be a resource for others.

Create subcommittees to address specific concerns of parents and caregivers for them to have an outlet to assist the Union SEPAG board in looking for solutions that can be shared with our partners.

Union's Special Education Parent Advisory Group

Union SEPAG Latest Activities and Initiatives

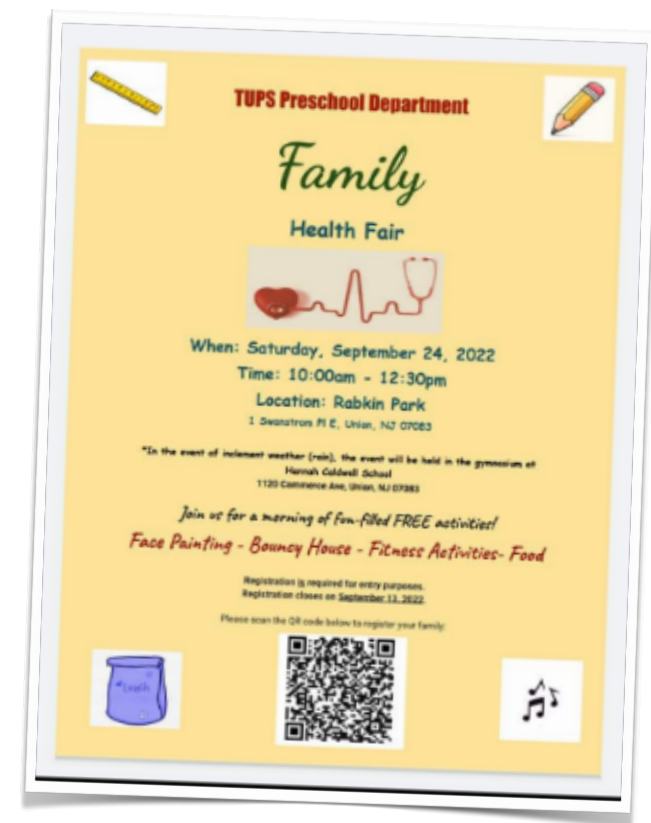


- Parent Workshop- Parental Rights in Special Education Q&A Session- Greer M. Gurland, ESQ.
 - Township of Union Special Services Department Presentation
 - Community Outreach- Town Annual Halloween Trunk or Treat
 - Launched an online survey to help us identify topic the community would like to discuss and learn about.
-

Union's Special Education Parent Advisory Group

Union SEPAG Latest Activities and Initiatives

- Presentation “Depression: Maybe the Student Is Not Just Moody” by Joyce Clark-Addison, LCSW.
- Presentation: “Why Should We Hire You? The Job Interview Process in Youth with Disabilities” by Dr. Helen Genova, Center for Autism Research at Kessler Foundation.
- Presentation by Fred Buglione Chair of the NJCIE



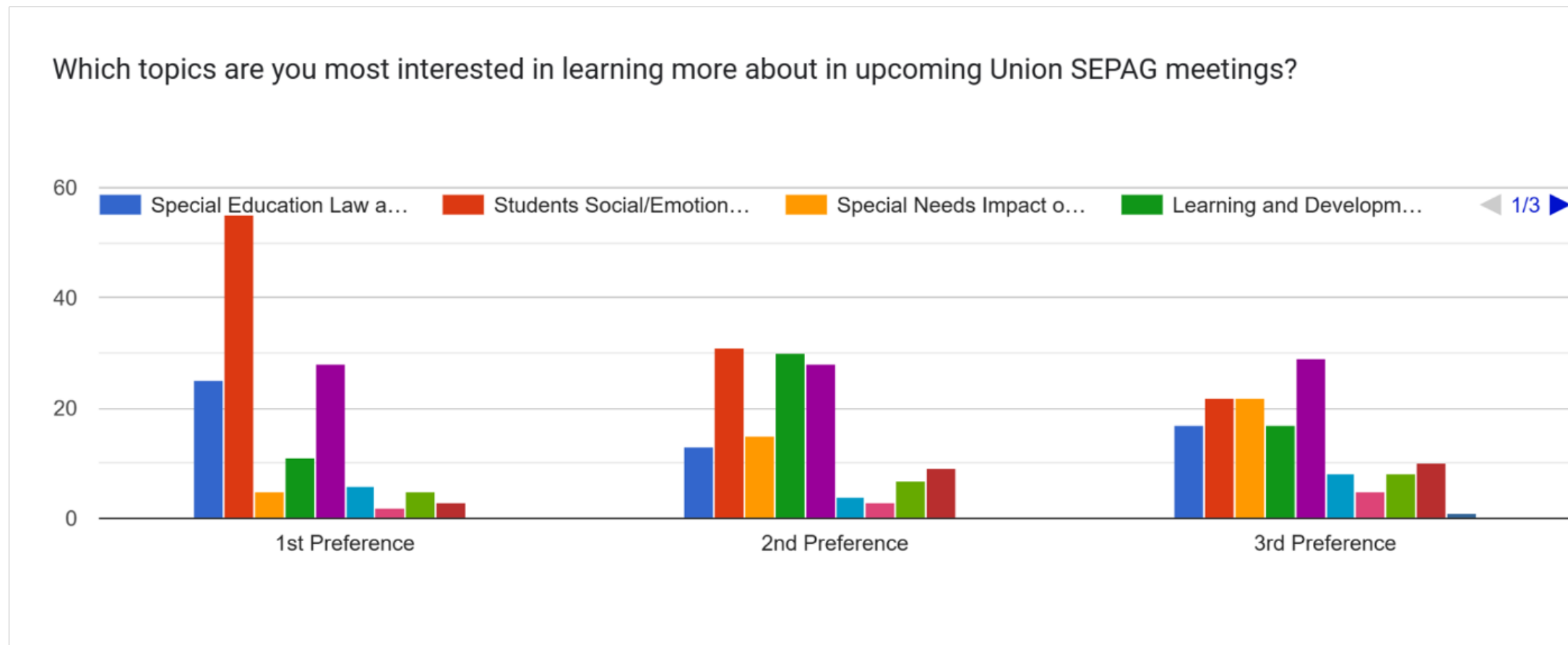
Union's Special Education Parent Advisory Group

Union SEPAG Latest Activities and Initiatives



Union's Special Education Parent Advisory Group

Union SEPAG Community Input



Union's Special Education Parent Advisory Group

Why Should I get Involved in my Local SEPAG?

Participation in a SEPAG offers the opportunity to raise questions, voice concerns, and provide direct input to district and school leadership.

The great benefit of participating in a local SEPAG is that the individual needs of a child become part of “the big picture,” and can reach a broader community of children.

Union's Special Education Parent Advisory Group

Stay Connected

[https://www.twpunionschools.org/
departments_and_services/special_services/
union_sepag](https://www.twpunionschools.org/departments_and_services/special_services/union_sepag)

unionsepag@gmail.com

<https://www.facebook.com/UnionSEPAG>
<https://www.instagram.com/usepag07083/>

Union SEPAG - YouTube

To register:

<https://forms.gle/nYXRPqX1ErJTxUMw8>



The background features a large, faint watermark of the University of Northern Iowa logo. It consists of a large, stylized letter 'U' with a light beige border and a light purple fill. Inside the right vertical bar of the 'U', the word 'UNION' is written vertically in white, bold, sans-serif capital letters.

HIB Bi-Annual Report and Current Report

February 21, 2023

HIB Report

January 10- February 21

	Founded	Unfounded	2021-2022 (Same Period)
Battle Hill	0	1	1 unfounded
Burnet Middle	5	0	0
Connecticut	0	0	1 founded
Franklin	0	0	0
Hannah Caldwell	0	1	0

HIB Report

January 10- February 21

	Founded	Unfounded	2021-2022 (Same Period)
Jefferson	1	4	1 founded/1 unfounded
Kawameeh Middle	1	1	1 founded/1 unfounded
Livingston	0	0	0
Washington	0	0	0
Union High	5	10	1 founded/1 unfounded

HIB Bi-Annual Report

September- December 2022

	Founded	Unfounded
2021-2022 Period 1	17	14
2022-2023 Period 1	32	28

HIB Bi-Annual Report

September- December 2022

	Founded	Unfounded		Founded	Unfounded
Battle Hill	1	1	Jefferson	2	9
Burnet Middle	7	1	Kawameeh Middle	6	1
Connecticut	2	0	Livingston	1	1
Franklin	0	4	Washington	0	0
Hannah Caldwell	0	0	Union High	13	11

A large, light-colored watermark of the letter 'U' is centered on the page. The 'U' has a thick, yellowish-gold outline and a light purple or lavender fill. It is positioned behind the main text.

Student Safety Data System Report (SSDS)

April 26, 2022

Student Safety Data System Report (SSDS)

Period 1 (September-December)

	Violence	Vandalism	Substances	Weapons
2022-2023	28	3	84	6
2021-2022	26	3	41	4

Student Safety Data System Report (SSDS)

Period 1 (September-December)

	Violence	Vandalism	Substance	Weapons
High School	15	1	84	2
Burnet Middle	4	1	0	0
Kawameeh Middle	9	0	0	0

Flavored cannabis marketing criticized for targeting children

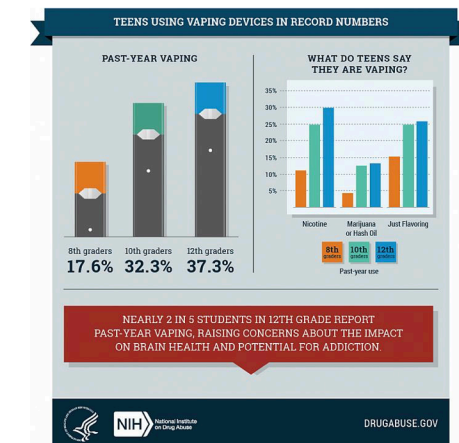
[Economy](#) Jan 19, 2023 7:59 PM EST

Vaping Rises Among Teens

[En español](#) | [Send us your comments](#)

A new survey found an alarming rise in the number of American teens who tried vaping last year. The study suggests that vaping may be driving an increase in nicotine use for teens.

In vaping, a battery powered device called an e-cigarette heats a liquid into a vapor that can be inhaled. The vapor may contain nicotine (the addictive drug in tobacco), flavoring, and other chemicals. E-cigarettes can also be used with marijuana, hash oil, or other substances.



Vape giant Juul to pay \$438.5M to N.J., other states over allegations it marketed to teens

Published: Dec. 06, 2022, 5:19 p.m.

Sales are rising of flavored e-cigarettes using synthetic nicotine that evades regulatory oversight, a gap that lawmakers are now trying to close.

Vaping

Programs to Educate Students, Parents/Guardians and Personnel

Prevention Links

<https://preventionlinks.org/>

Don't get Vaped In

<https://www.tobaccofreenj.com/don-t-get-vaped-in-1>

Sam Anthony Speaks

<https://samanthonySpeaks.com/>

Vaping

Programs to Educate Students, Parents/Guardians and Personnel

JCK Foundation

<https://jckfoundation.org/>

Hidden in Plain Sight

<https://betterbrodhead.org/hidden-in-plain-sight/>

Union High School Family Forum

Vaping

Support

Children's System of Care

<https://www.unionresourcenet.org/about/about-nj-s-children-s-system-of-care-csoc/>

PerformCare

<https://www.performcarenj.org/>

Union County Youth Services Commission

<https://www.unionresourcenet.org/search/union-county-youth-services-bureau/>

Vaping

Support

PROCEED

<https://proceedinc.com/>

Students Helping out Union County

<https://www.unionresourcenet.org/search/uc-shout-union-county-students-helping-out/>
